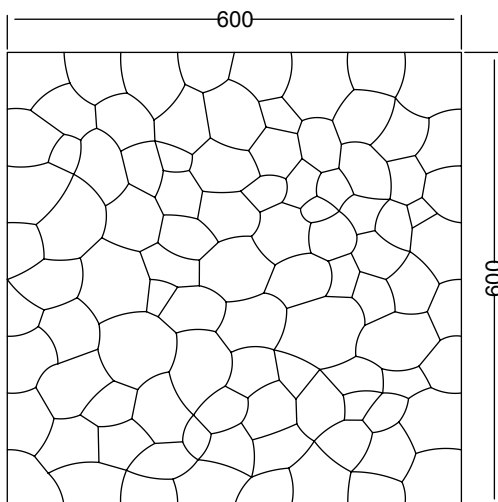


Bolle

design Fabio Fazio



3D WALL TILES

Materiali / Material

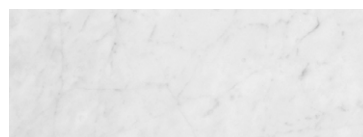
Bianco Carrara, Bianco Calacatta, Bianco Fenice, Crema Tunisi, Bardiglio Imperiale, Grigio Tunisi, Grigio Billiemi, Nero Marquinia, Nero Portoro, Marrone Emperador, Pietra Pece.

Dimensioni / Dimensions

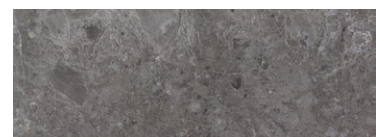
600x600x20 mm

Peso / Weight

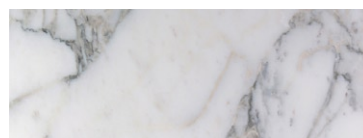
14,6 kg



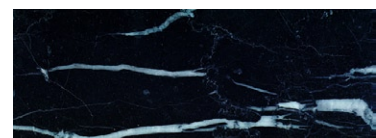
BIANCO CARRARA



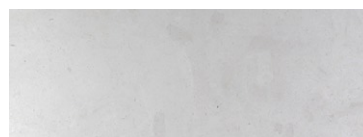
GRIGIO BILLIEMI



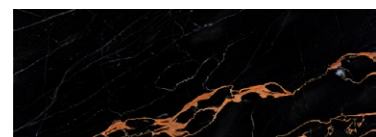
BIANCO CALACATTA



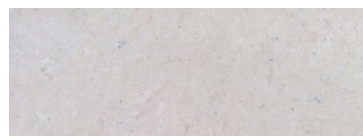
NERO MARQUINIA



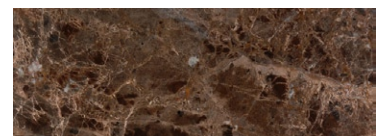
BIANCO FENICE



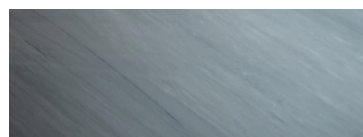
NERO PORTORO



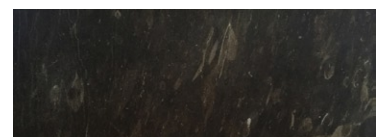
CREMA TUNISI



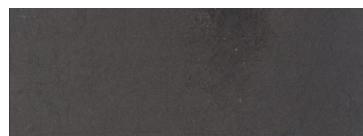
MARRONE EMPERADOR



BARDIGLIO IMPERIALE



PIETRA PECE



GRIGIO TUNISI

LITHEA

LITHEA

Via Case Nuove Russo - Timeto
98066 Patti (ME) - ITALY
T. +39 0941 050123

www.lithea.it

info@lithea.it

MADE IN ITALY