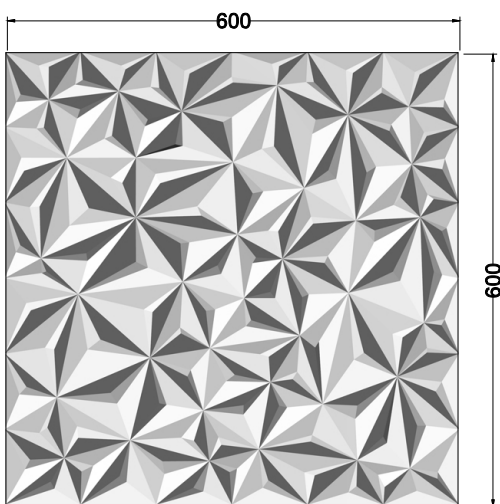
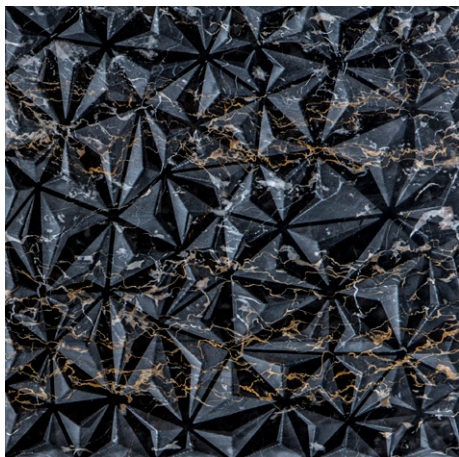


# Origami

design Fabio Fazio



## 3D WALL TILES

### Materiali / Material

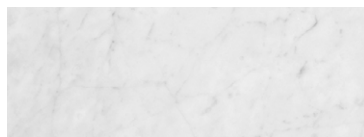
Bianco Carrara, Bianco Calacatta, Bianco Fenice, Crema Tunisi, Bardiglio Imperiale, Grigio Tunisi, Grigio Billiemi, Nero Marquinia, Nero Portoro, Marrone Emperador, Pietra Pece.

### Dimensioni / Dimensions

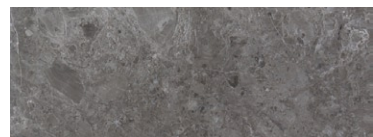
600x600x20 mm

### Peso / Weight

14,6 kg



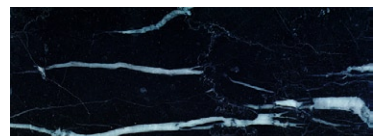
BIANCO CARRARA



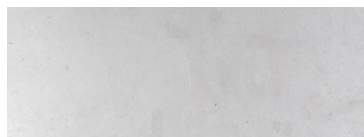
GRIGIO BILLIEMI



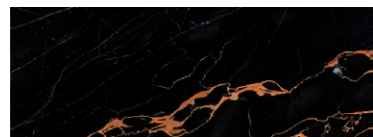
BIANCO CALACATTA



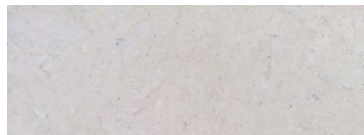
NERO MARQUINIA



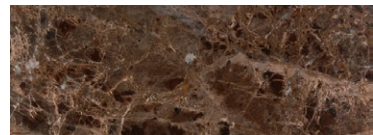
BIANCO FENICE



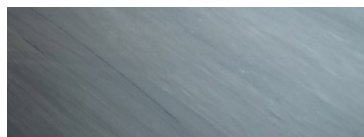
NERO PORTORO



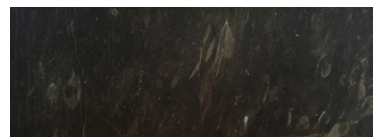
CREMA TUNISI



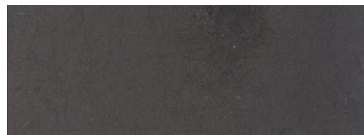
MARRONE EMPERADOR



BARDIGLIO IMPERIALE



PIETRA PECE



GRIGIO TUNISI

# LITHEA

**LITHEA**  
Via Case Nuove Russo - Timeto  
98066 Patti (ME) - ITALY  
T. +39 0941 050123

[www.lithea.it](http://www.lithea.it)  
[info@lithea.it](mailto:info@lithea.it)

**MADE IN ITALY**